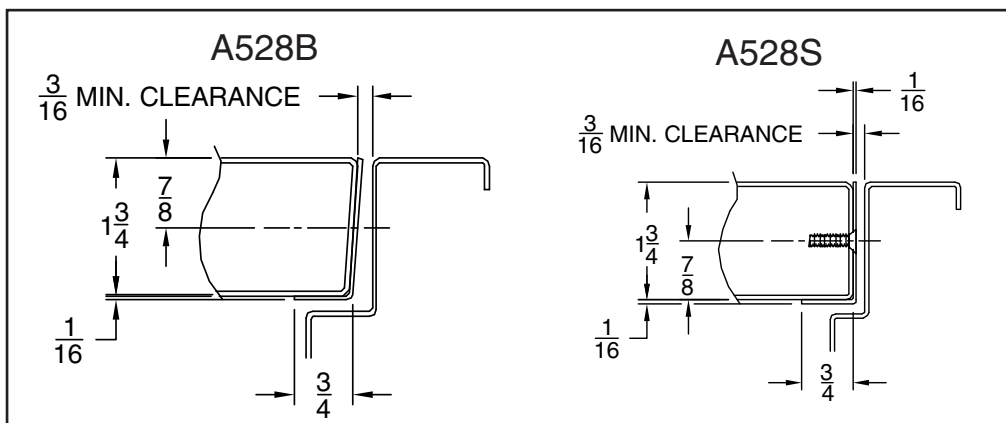


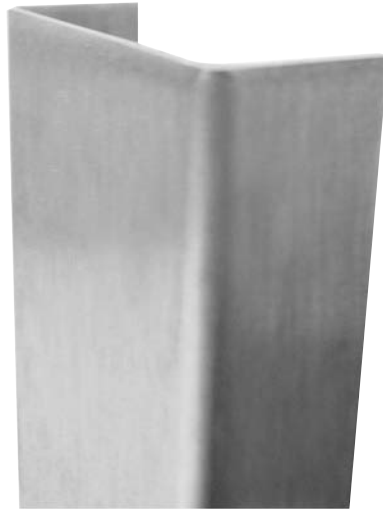
A528 EDGE GUARD



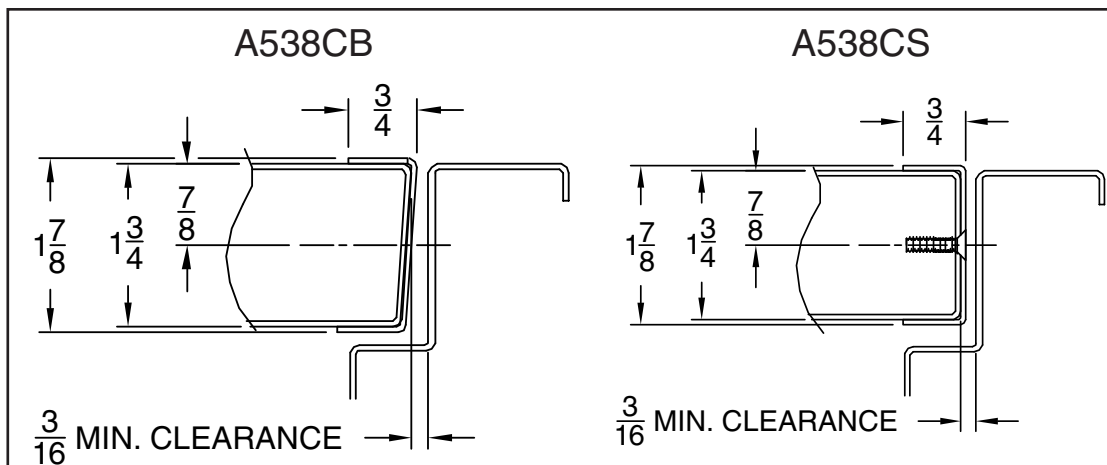
- 3/4" door edge lip, one side
- Standard lengths 78-3/4", 83-1/8", 85", 96", 118-3/4"
- For bevel edge door (Suffix B) or square edge door (Suffix S)
- Special lengths available
- For 1-3/4" door
- Material 16 Gauge, 304 Stainless Steel
- For high traffic, high abuse doors
- Cut-outs available as required
- Non-handed



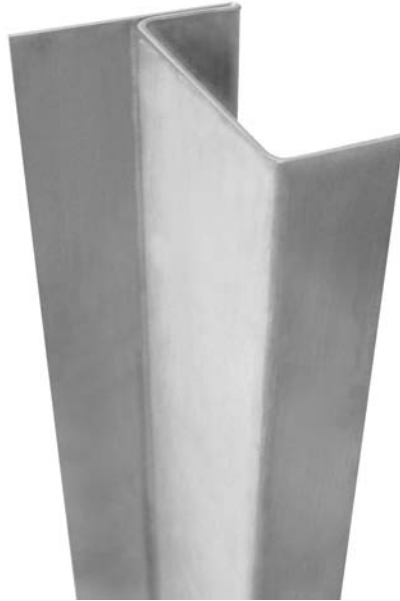
A538C EDGE GUARD



- 3/4" door edge lip, both sides
- Standard lengths 78-3/4", 83-1/8", 85", 96", 118-3/4"
- For bevel edge door (Suffix B) or square edge door (Suffix S)
- Special lengths available
- For 1-3/4" door
- Material 16 Gauge, 304 Stainless Steel
- For high traffic, high abuse doors
- Cut-outs available as required
- Non-handed



A548T EDGE GUARD WITH ASTRAGAL



- 3/4" door edge lip, both sides
- Standard lengths 78-3/4", 83-1/8", 85", 96", 118-3/4"
- For bevel edge door (Suffix B) or square edge door (Suffix S)
- Special lengths available
- For 1-3/4" door
- Material 16 Gauge, 304 Stainless Steel
- For high traffic, high abuse doors
- Cut-outs available as required
- Non-handed

